



Software for Moisture titrator

KF-Win
KE-MIO



SUMMARY



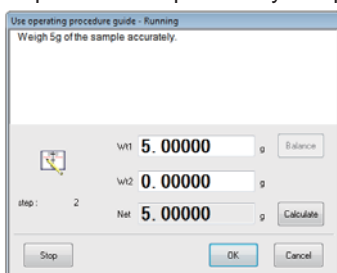


KF-Win software enables your PC to control KEM's KF Moisture titrators including MKC-710B, MKV-710B, MKC-520, MKA-520, MKS-520, MKC-510N, MKA-510N and MKS-510N. KF-Win is designed to control the Moisture titrator unit including start and reset of it, and set conditions and parameters of titration or sample materials from the PC. KF-Win works on Microsoft® Windows®.

FEATURE

Subsequent instructions on display

While measurement, instructions appear on display to prompt subsequent procedures like solvent addition and entry of sample size. The instructions can reduce operational error to implement complex analytical procedures.



Full and versatile documentation

CSV format is now available as a titration data format, which is ever offered as its own format of the Moisture titrator. CSV can be used in many other application tools like Microsoft® Excel®, Microsoft® Access® or Microsoft® Word® for quick analysis and effortless documentation.

Titration Result

	Approval	Verify
Sample Name	KF - OVEN (5.51%)	
Lot No.	1234	
Sample No.	01-01	
Note		

Operator	MANAGER
Model / Serial No	MKC-710 / 20200001

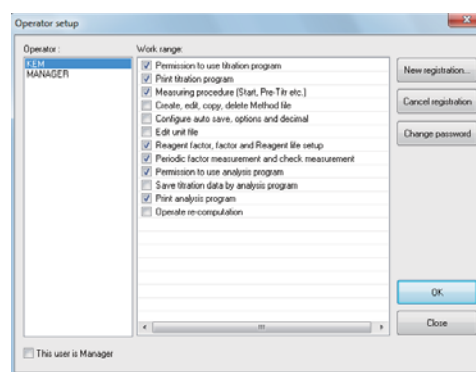
Data Filename	2015-09-18 17:16:31.kc71
Titration date	2015/09/18 16:59
Analyte	
Cathode	

[Titration Result]	
Tare included weight	0.1044
Tare weight → (g)	0.0000
Sample size → (g)	0.1044
Result → (%)	5.57
Moisture → (ug)	5812.1
Drift → (ug/sec)	0.16
Blank → (ug)	0.0000

[Titration curve]

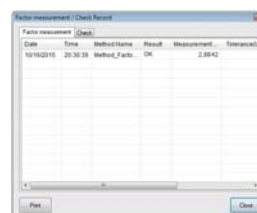
Operation permission defined for each user

This system requires user name and password to start the titration program and the administrator can define which operation is permitted for each user. This function is designed to prevent a user from affecting entire measurement settings.



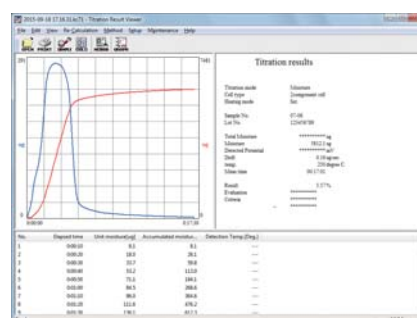
Fully GLP conformed

- Factor calibration : notice of periodical calibration date, record of factor calibration
- Check with standard substance : notice of periodic check date, check record
- Other function : setting of operation permission for each operator, error record



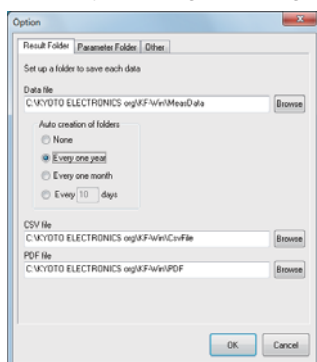
Titration result viewer program

New viewer program can show titration results recorded by KF-Win. This viewer program can not only show all of titration results but also recalculate or simulate the data of these results. It is also possible on any computer connected through LAN to the main computer directly connected to the titrator by installing the viewer program.



Auto creation of folders

Folders named daily, monthly or annually can be created and titration result files can be sorted into the folders automatically. It helps you to organize huge data.

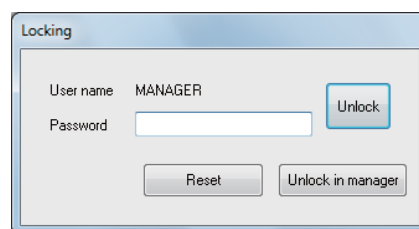


PDF output

Various data including results and methods can be output in PDF format. It enables you to manage titration results in a common electronic file and to show results on any PC without installation of additional software.

Operation lock

You can lock the KF-Win when you leave the titrator during titration process. The lock function can prevent the titration from being operated incorrectly by other operators. It is helpful for the circumstance where several operators use the same computer.

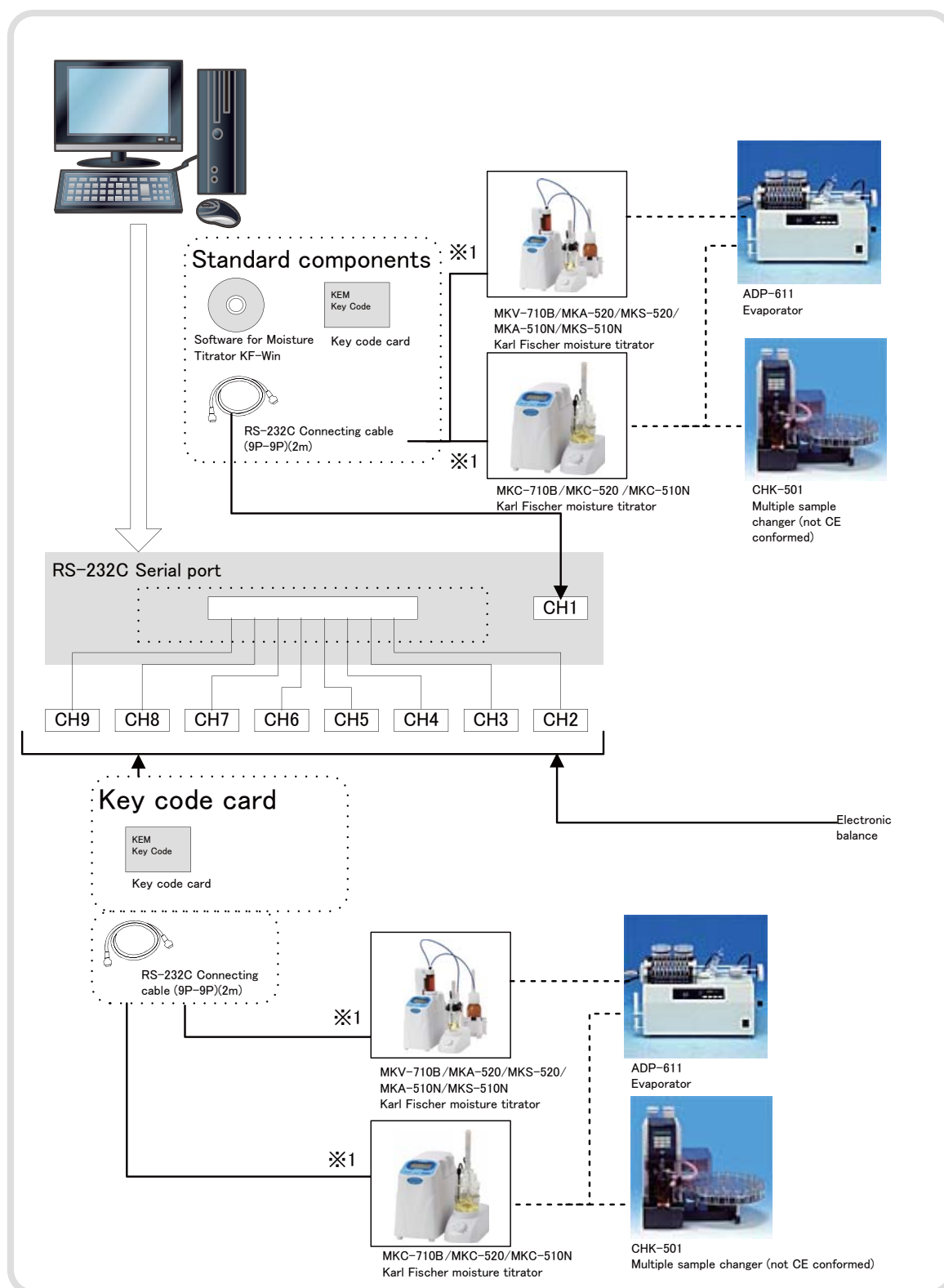


Connection of bar code reader

With the bar code reader connected to PC, it makes easy to input lot number or sample ID. A commercially available bar code reader can be used.



SYSTEM CONFIGURATION



※1 In case of connecting MKV-710B or MKC-710B, MINIDIN8P-DSUB9PM cable is necessary.

KF-Win standard supplied parts

	Part name	Qty
1	KF-Win software CD including the operation manual	1
2	Connection Cable (9P-9P) 2m	1
3	Key code card ※2	1
4	KF-Win Installation manual	1

The following parts are needed to connect the second and additional equipment.

Key code card ※2

Connection Cable (9P-9P) 2m

Connection Cable (MINIDIN8P-DSUB9PM) (in case of connecting MKV-710B or MKC-710B)

※2 It is necessary for issuance of a Key code card for a user to notify the serial number of a titrator to KEM. (no notification needed to if you purchase the titrator and KF-Win software at the same time)

SPECIFICATION

Specification	Description	
Model name	Software for Moisture titrator Model KF-Win	
Display	Measurement screen	Real time display of titration curve, cell type and channel, sample No., Lot No.
	Parameter screen	Method parameter (conditions, formula, etc.), sample parameter (sample size, method file name, Lot No., sample name and constant, etc.)
	System information	Display of connected condition of titrator
Print	Measurement results, data list, method parameters, sample parameters. Printout into one sheet (4 data, 2 data, 1 data/sheet)	
Calculation	Concentration conversion and equations for various measurements can be formularized	
Data files	Measurement results and parameters saved in hard disk. Number of files depends on capacity of hard disk	
Data processing	Statistics	Mean, standard deviation, relative SD
	Re-calculation	Sample size, Blank, constant, factor, Reagent factor, etc.
	Transfer data	Report in Word, Data saving in CSV or MDB format, External output to PC
Security	Identify with user ID and password. Management by operated item and level	
Operating guide	Guiding messages like prompting steps, sample size input or commenting	
GLP/GMP	Factor control	Notice of factor calibration date and recording
	Periodic check	Notice of check date with standard and record
	Operational record	Record of operation by KF-Win
Alarm message	Key entry, calculation error, malfunction alarm, etc.	
Compatible model	MKC-710B, MKV-710B, MKC-520, MKA-520, MKS-520, MKC-510N, MKA-510N, MKS-510N	

Required systems

Specification	Description
Computer	Able to run Windows 7 Professional (SP1 or later)
Operating system	Windows 7 Professional (SP1 or later) 32bit or 64bit
Others	Internet Explorer 8.0 or later, Adobe Acrobat Reader 9.0 or later
Memory	More than 1GB RAM
Hard disk	More than 40GB RAM for installation
Display	More than 1024*768 display
Disk driver	CD-RW driver or DVD-RAM
Serial port	RS232C D-sub male 9-pin or USB port with serial converter : 1 additional port for each titrator ※1 ※2

※1 1) Each KF Moisture Titrator requires its individual serial port. It is the same as an electric balance or a bar code reader is connected to the PC.

2) Up to 4 titrators can be connected to one computer.
Note that internal serial port may already be occupied with internal modem.

3) Serial port(s) can be added by RS232C expansion board (option).
Note: more than 1 slot for PCI bus, and PCI bus of Low Profile type may not be able to install.

※2 A USB serial converter is required via USB.

KEM KYOTO ELECTRONICS
MANUFACTURING CO.,LTD.
<http://www.kyoto-kem.com>

Overseas Division : 2-7-1, Ichigaya-sadohara-cho, Shinjuku-ku
TOKYO, 162-0842, JAPAN
Fax : +81-3-3268-5591 Phone : +81-3-5227-3156

Distributed by